

## JOH921 HI-VIS FLEECE JUMPER

Warm. Practical. Ready for the Cold. A dependable cold-weather essential, this hi-vis fleece is designed to keep your team warm, visible, and comfortable across dealership yards, workshops, and on-site environments.

Made from heavyweight anti-pill fleece, it provides insulation without restricting movement, making it ideal for layering over polos or shirts. The half-zip design allows for quick temperature control, while the clean, no-fuss construction ensures it holds up to daily wear.

This is a straightforward, reliable solution for cooler conditions—easy to wear, easy to issue, and built for the job.

### Features:

- John Deere logo embroidery on front
- Official certificate of authenticity hang tag
- 100% polyester anti-pill fleece – heavy-weight 390 GSM for warmth
- Half-zip construction for adjustable ventilation and comfort
- Side seam pockets to keep hands warm in cold conditions
- Comfort cuffs for improved fit and insulation
- Durable construction designed for frequent wear
- Chunky zip for ease of use with gloves
- HI VISIBILITY DAY ONLY - 4602.1:2011 High-Visibility Safety Garment Construction Class D
- UPF 50+ protection for outdoor work
- Easy-care fabric suited to daily wear and washing

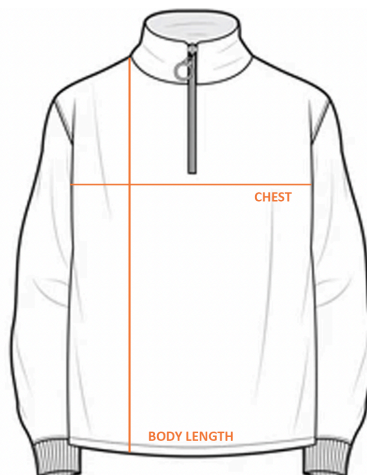
### Decoration:

John Deere Contemporary logo embroidered.

*\*All variations of the John Deere Trademark: including Agriculture & Turf, Construction & Forestry, and Neutral may also be available. Ask us for details!*

### Sizing:

SIZE	S	M	L	XL	2XL	3XL	5XL
CHEST (cm)	58	60	62	64.5	67	72	82
BODY LENGTH (cm)	73	74	76	78	80	82	84



*Note: DKM Blue reserves the right to change colours, technical details or designs.*